



AUSTRIA

SALZBURGER
LAND



KitzSki

Willkommen
WILDKOGEL!
DIE ARENA
Neukirchen - Gramberg

KITZSTEINHORN
ZELL AM SEE - KAPRUN



Zell am See
Kaprun

TAUERN
SPA
ZELL AM SEE - KAPRUN



Restaurant



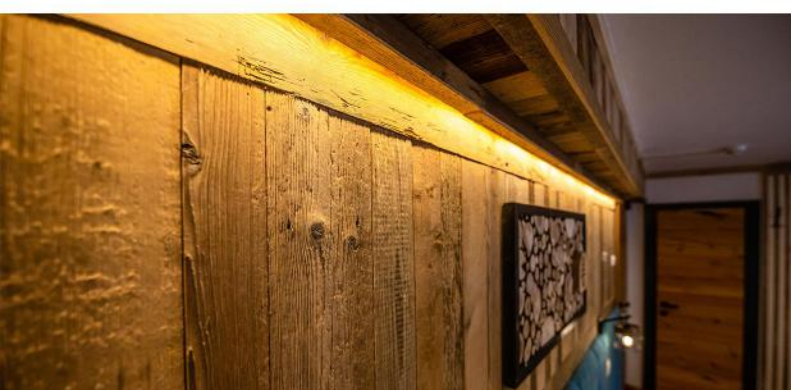
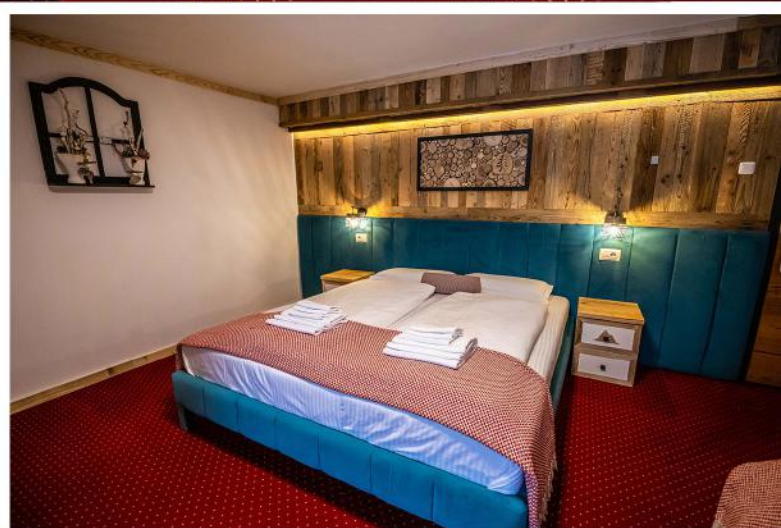


Breakfast and dinner



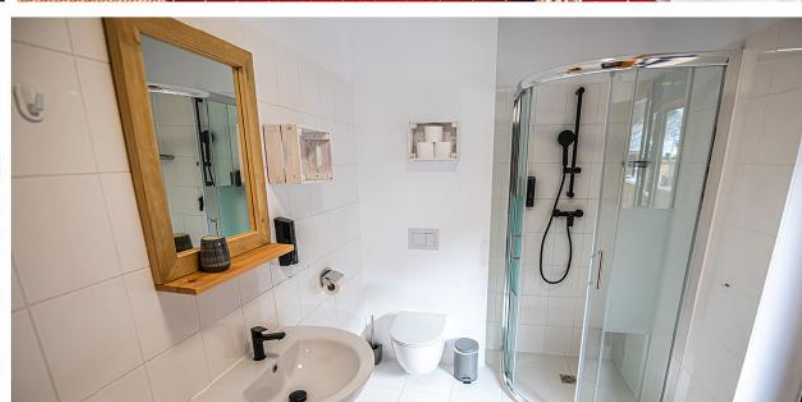
ROOM 001

Alpen Pension
Kitzbühel



ground floor | 4 persons room | 18 m²

ROOM 101



ROOM 102



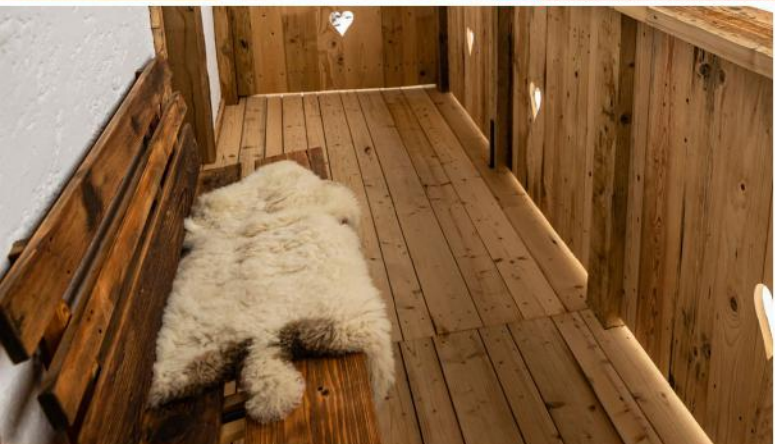
ROOM 103



1'st floor | double room (+1 extra) | 15 m²

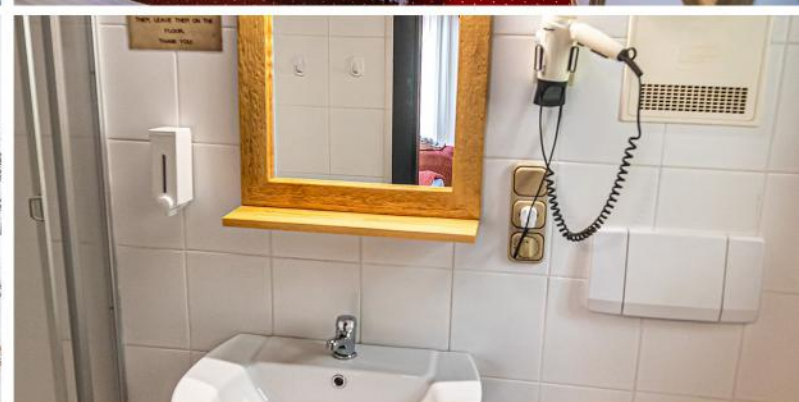
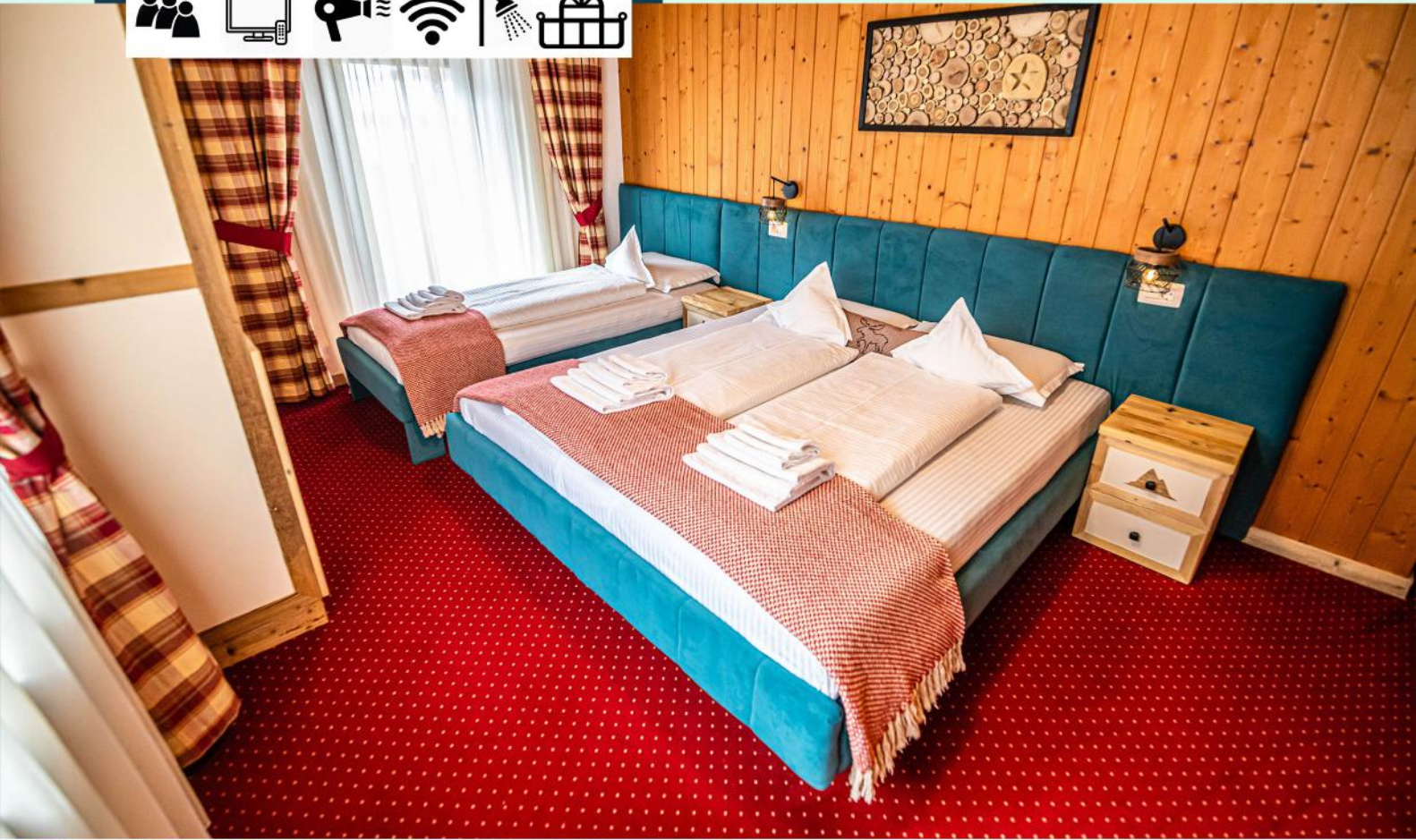
ROOM 104

Alpen Pension
Kitzbühel



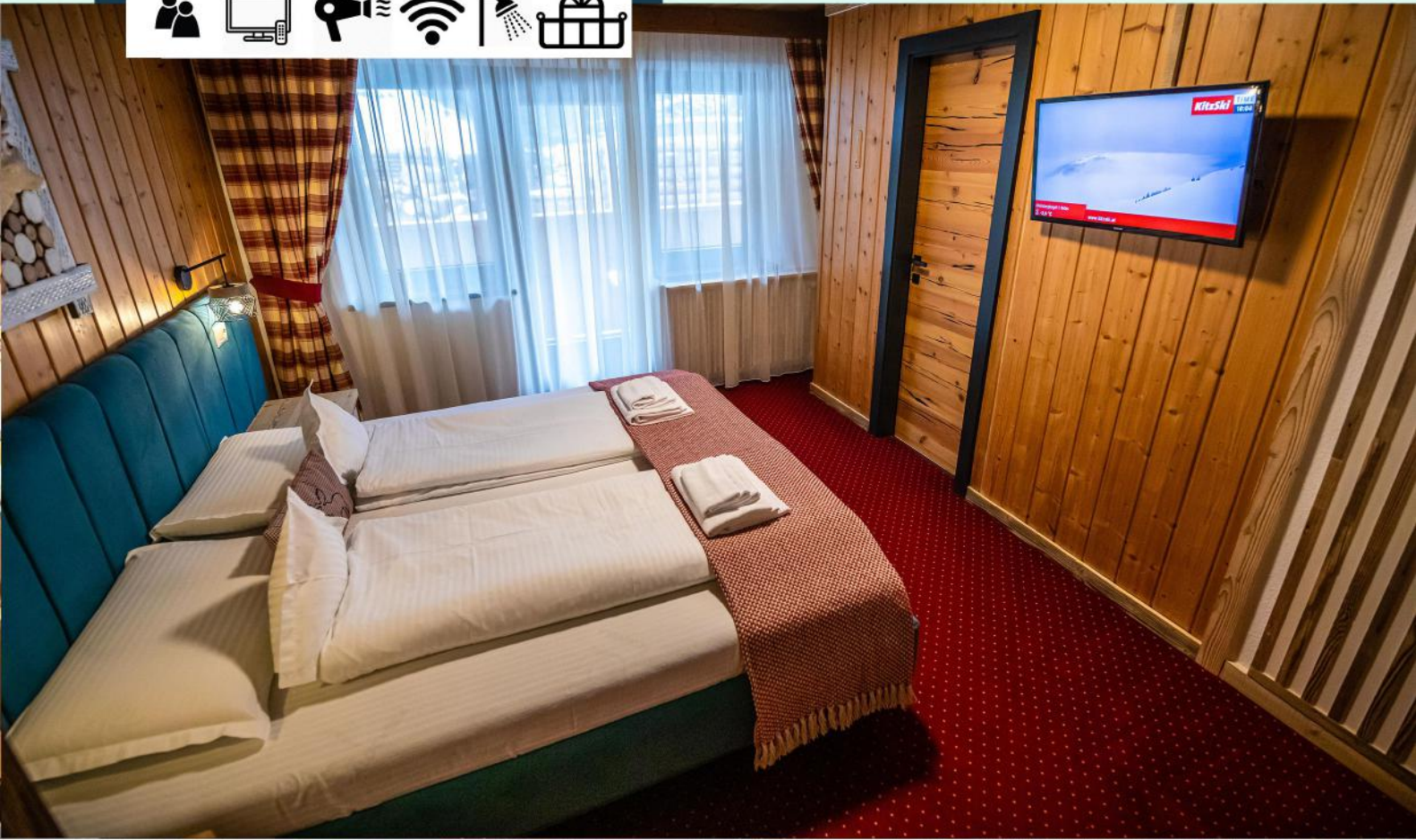
1'st floor | 4persons room | 21 m²

ROOM 105



1st floor | triple room | 19 m²

ROOM 106



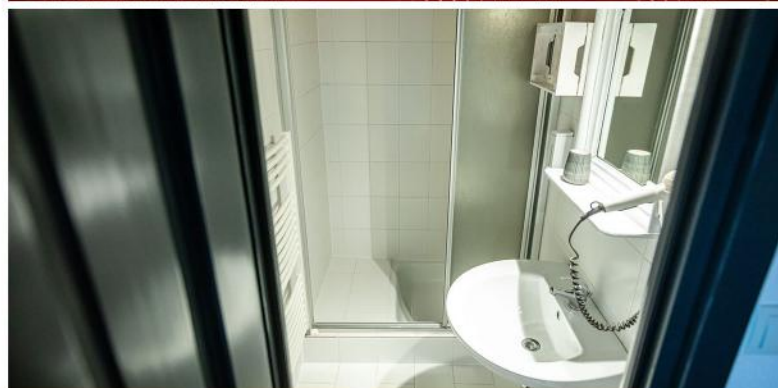
1'st floor | double room | 15 m²

ROOM 201



2'nd floor | double room | 17 m²

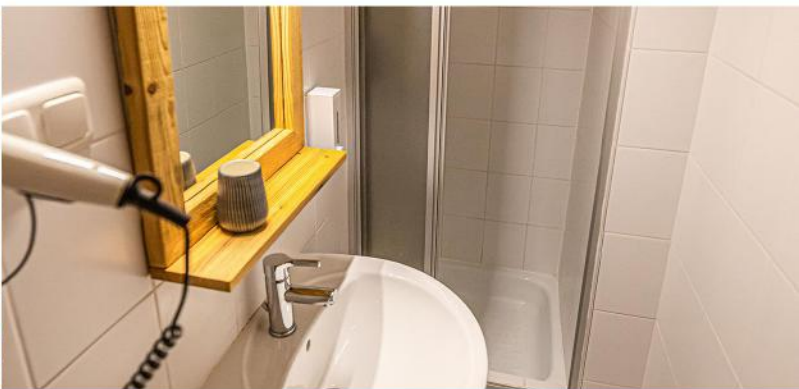
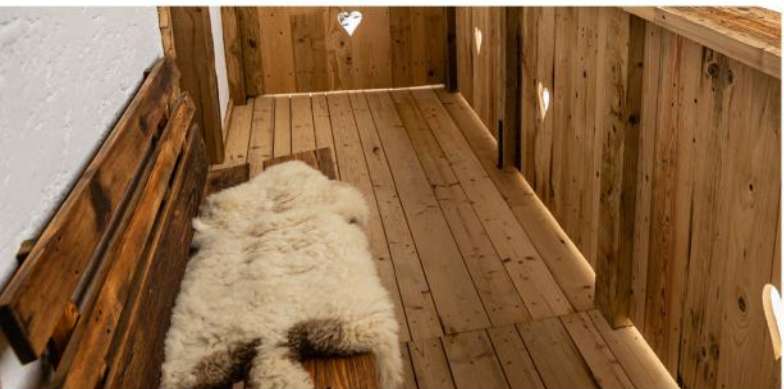
ROOM 202



2'nd floor | double room | 18 m²

ROOM 203

Alpen Pension
Kitzbühel



2nd floor | triple room | 18 m²

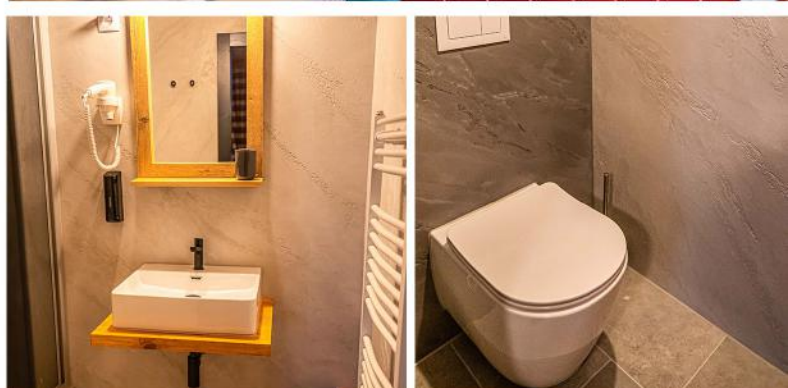
ROOM 204



2'nd floor | double room | 15 m²

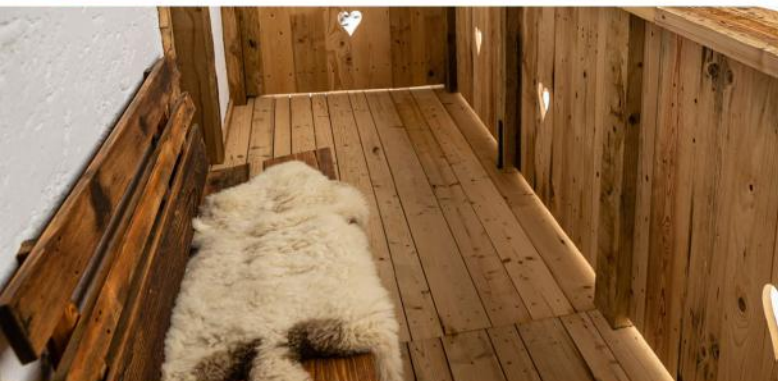
ROOM 205

Alpen Pension
Kitzbühel



2nd floor | double room | 17² m

ROOM 206



2nd floor | triple room | 16 m²

ROOM 301



3'rd floor | double room | 14 m²

ROOM 302



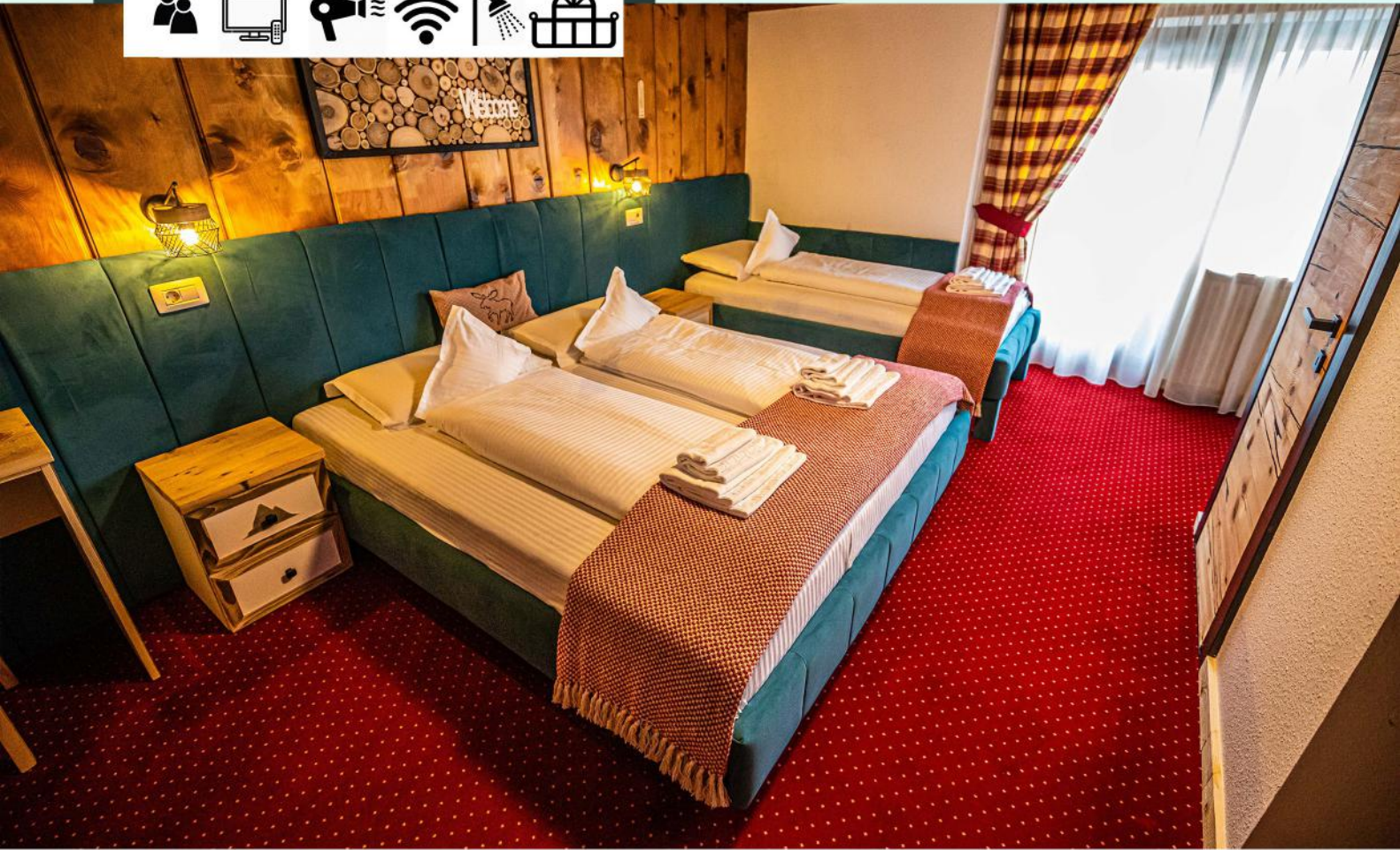
3'rd floor | double room | 14 m²

ROOM 303



3'rd floor | 4 persons room | 25 m²

ROOM 304

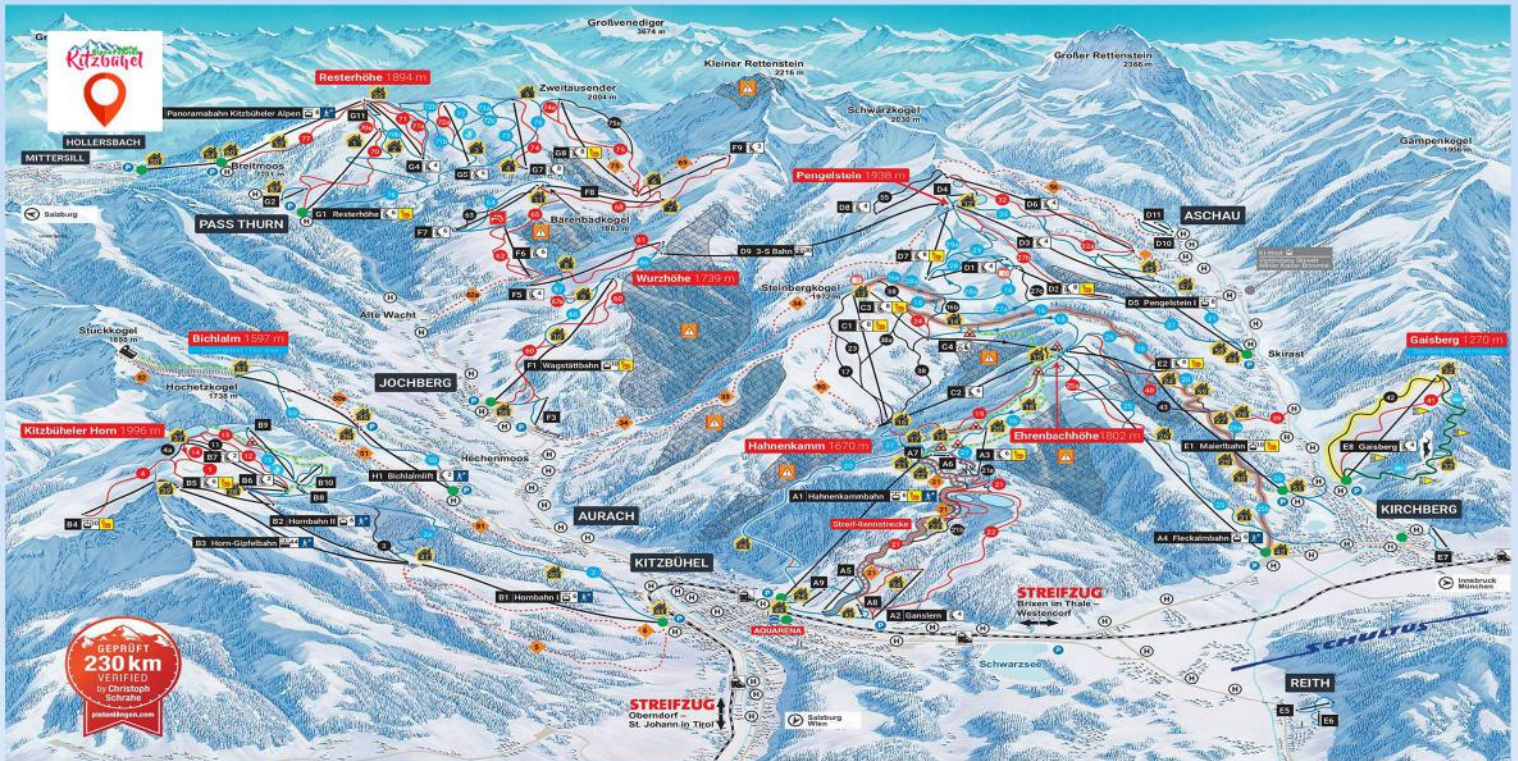
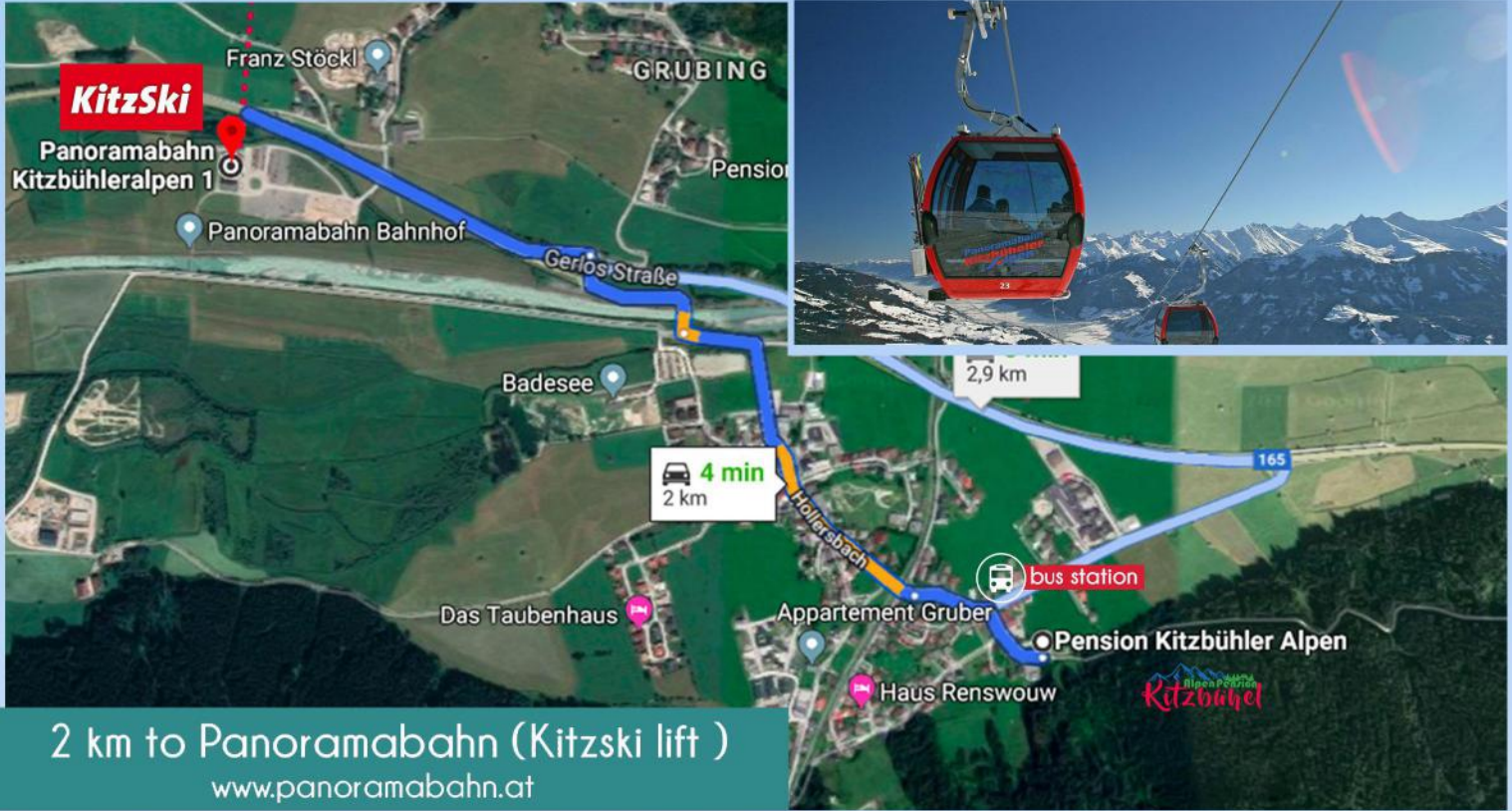


3'rd floor | triple room | 17 m²

ROOM 305



3rd floor | 4 persons room | 30 m²



Snow Park Kitzbühel



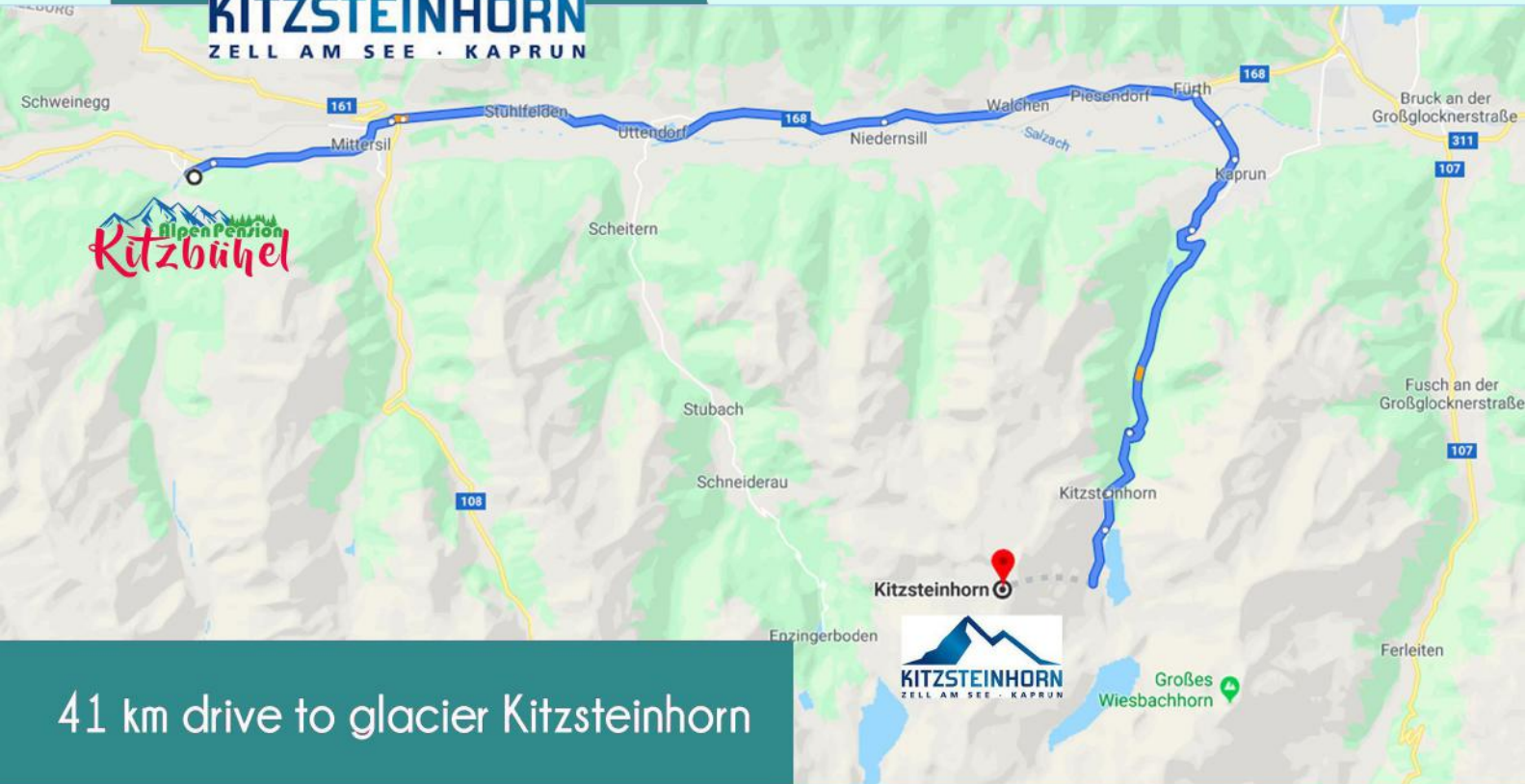
Willkommen WILDKOGEL!
DIE ARENA
Neukirchen · Bramberg

Wildkogel
Schweinegg
Bicheln
Hollersbach im Pinzgau
Pension Kitzbühler Alpen
Smaragdbahn
Bramberg am Wildkogel
Salzach

39 min
20,9 km

21 km drive to Wildkogel Arena
world's longest floodlit toboggan run

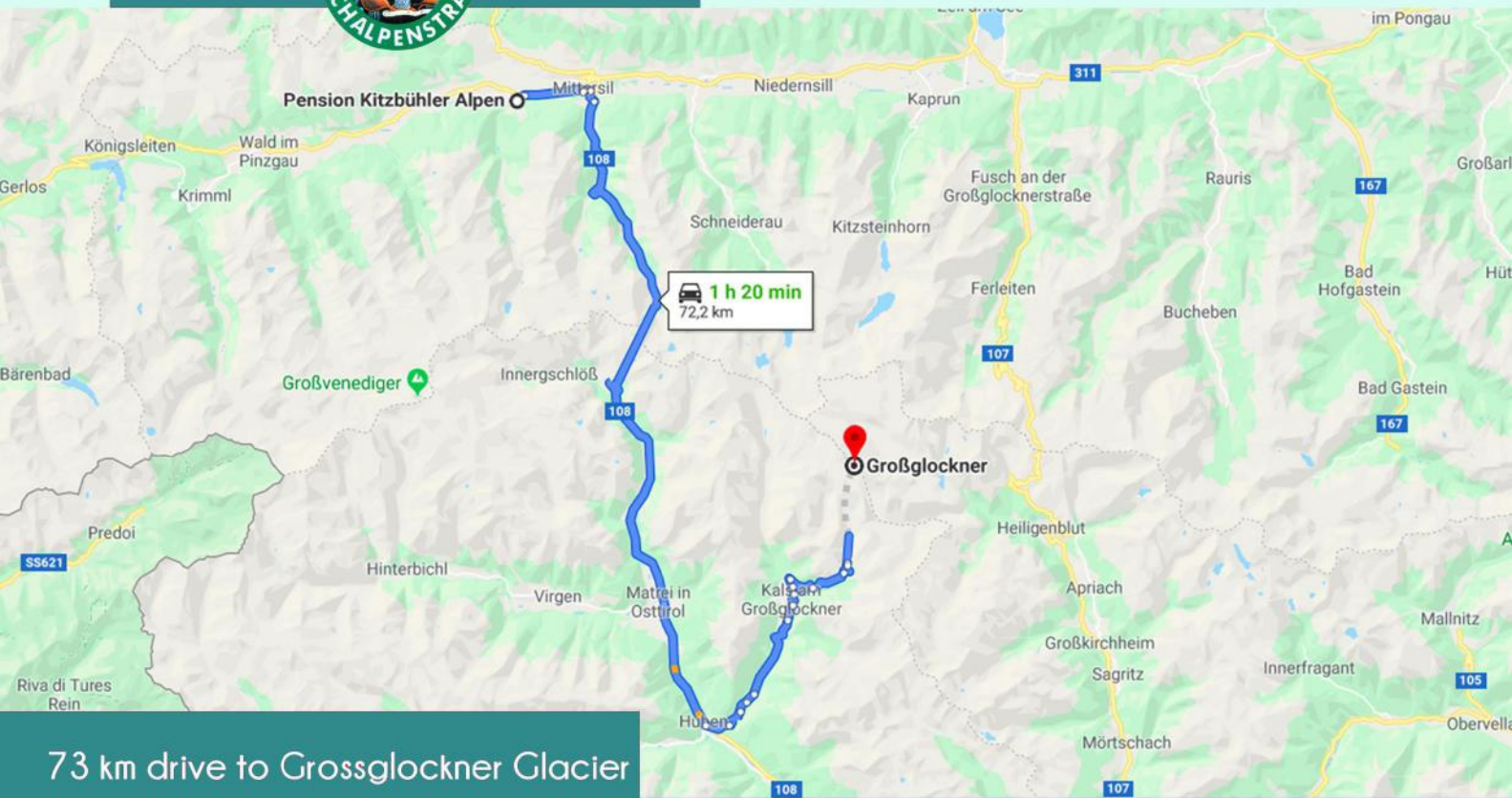




41 km drive to glacier Kitzsteinhorn

Experience the complete activity programme of the Alps from winter sports to views, from hiking and mountain biking to sightseeing in Gipfelwelt 3000 on **365 DAYS A YEAR.**



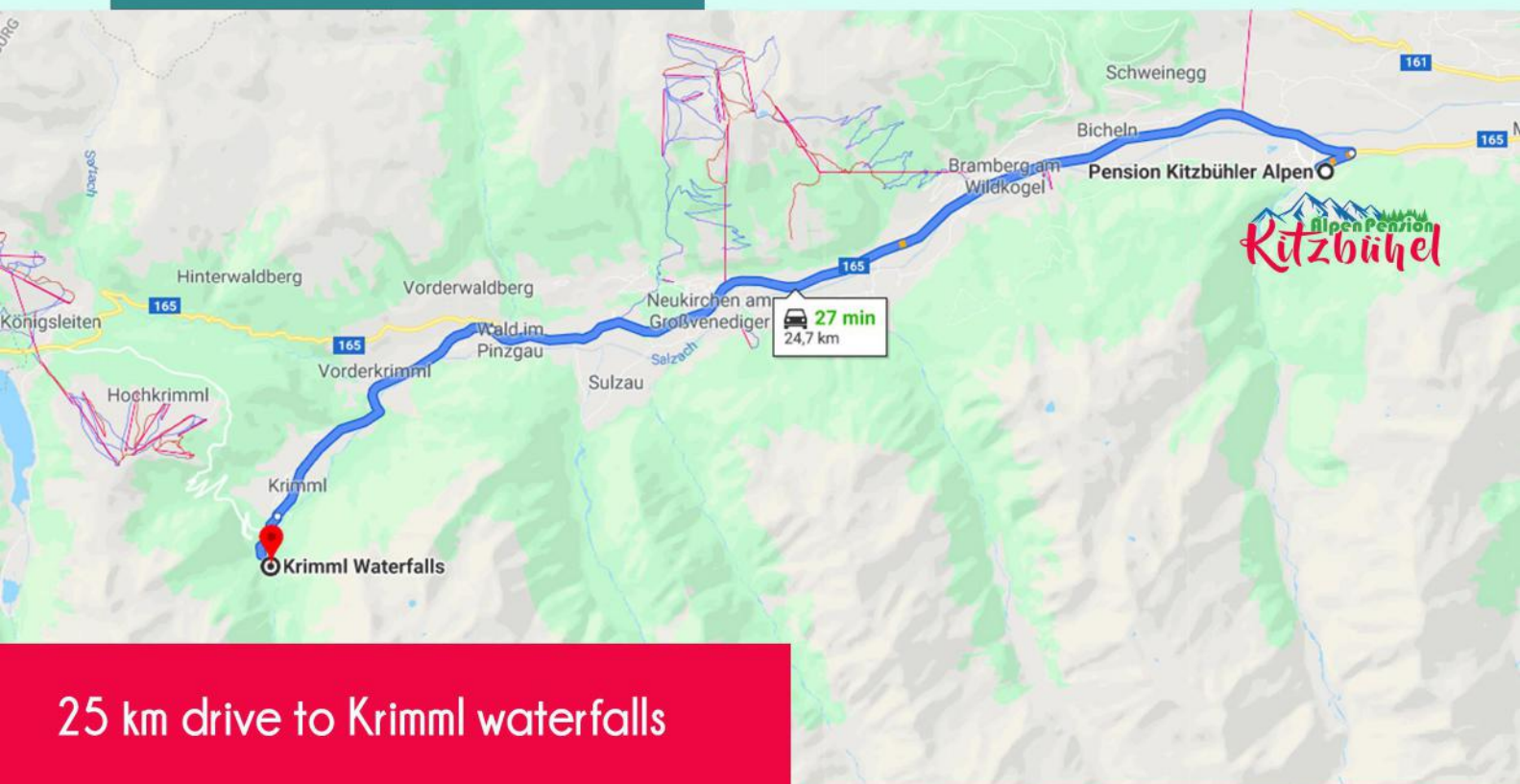


73 km drive to Grossglockner Glacier

AUSTRIA'S HIGHEST MOUNTAIN AND CENTREPIECE OF THE HIGH TAUERN NATIONAL PARK



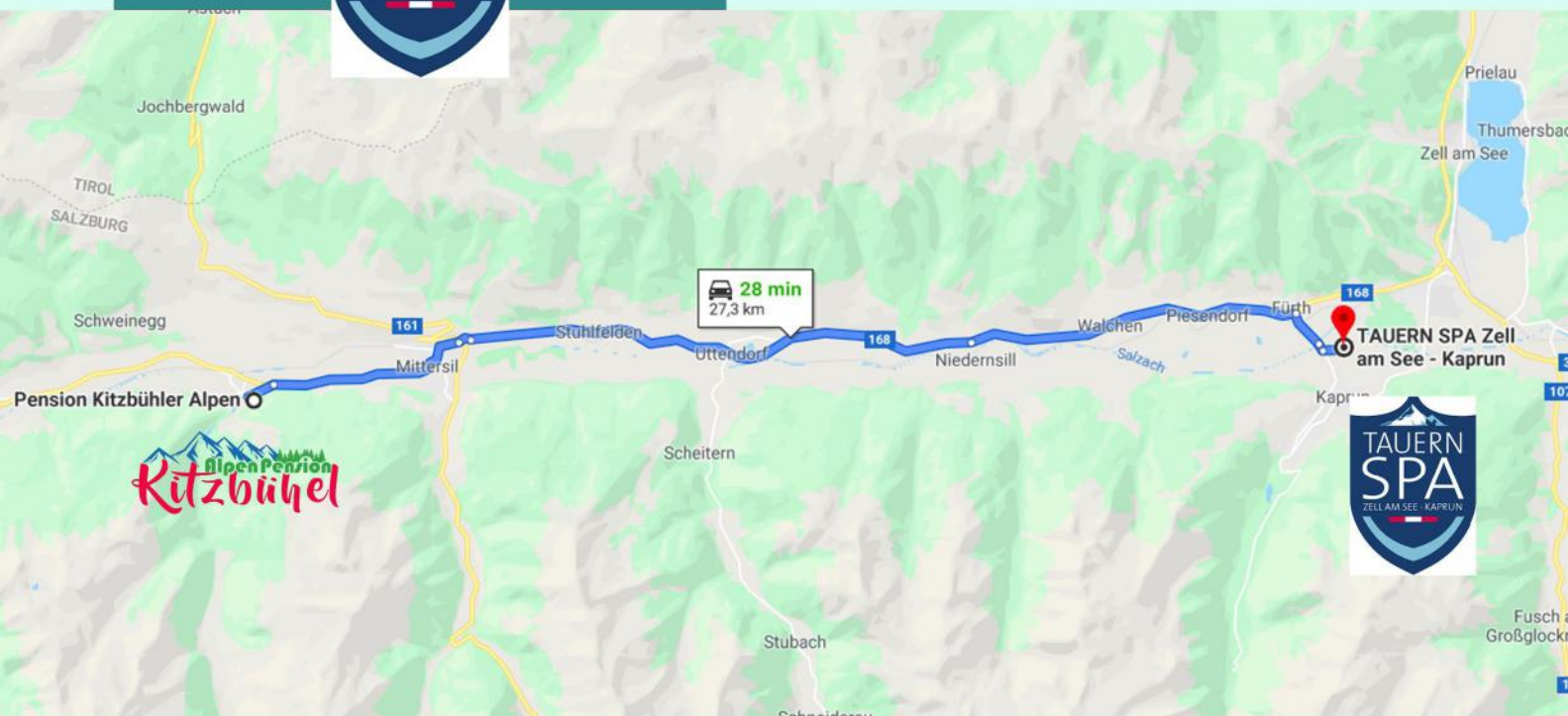
The "black mountain" rises 3,798 m above a sea of three hundred 3,000 m peaks surrounding it. The view from its summit falls on the high alpine scenery all around, which was shaped millions of years ago by elemental forces and hasn't stopped since.



25 km drive to Krimml waterfalls

Enjoy a spectacular hike to Austria's highest waterfalls. The three stages of the hike, starting in the village of Krimml, take you to ever more spectacular views of the falls and the surrounding countryside. Bring your camera and capture the most beautiful section of the falls!





The TAUERN SPA is a luxurious spa resort and hotel situated in some of the most spectacular scenery anywhere in the Alps. However you want to spend your holiday, from outdoor activities to total relaxation, we guarantee that you will leave refreshed and revitalised.



SNOW SHOES HIKING



HORSE-DRAWN SLEIGH RIDE

STEGER GEORG - MITTERSILL PH.: +43(0)664 205 21 68

TOWNS NEAR BY



5 km to Mittersil



33 km to Kitzbühel



118 km to Salzburg

Innsbruck 125 km | Wien 424 km | Munchen 156 km | Venezia 295 km



